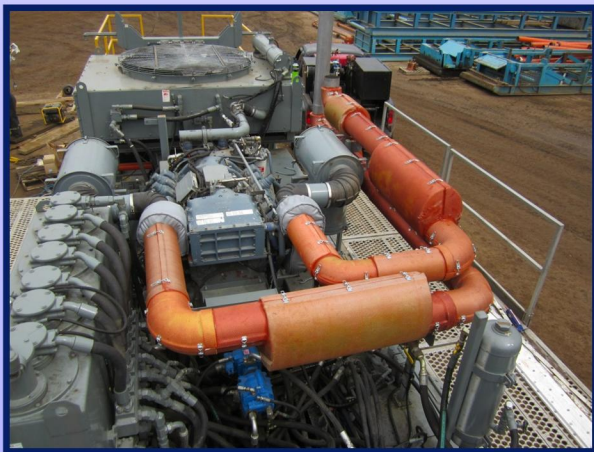
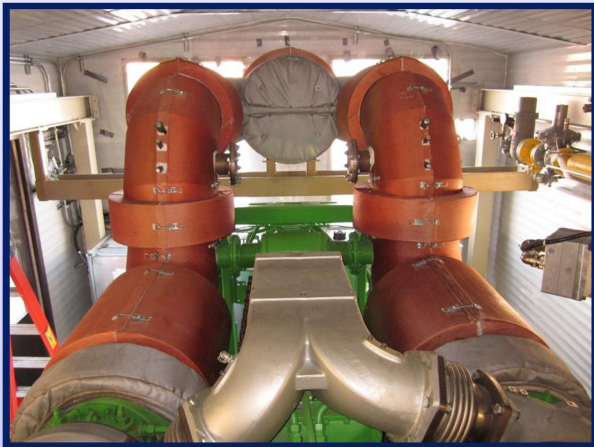


# **MUR \* TEC INC.**

## **HIGH TEMP INSULATION**



### **Design Features**

- High Impact Molded Fire Resistant Resin Shell
- Withstands Temperatures up to 2300 Degrees F
- Can be Retro-fitted to any existing Pipe
- Removable or Permanent installation
- Any Diameter/Radius Pipe up to 20 foot Lengths
- Existing Field product with over 10 + years Service

### **Safety**

- Outer Shell Temperature safe if Contacted
- Reduced chance of Combustion from outside sources, Oil and other Liquids
- Noise Reduction particularly in confined spaces

### **Benefits**

- Can be Molded to any style/make of Muffler to protect from Elements and reduce noise
- Molded to fit ANY Engine Any Manufacturer
- Application's include but not limited to Coolant, Exhaust and Steam

[www.mur-tec.com](http://www.mur-tec.com)

[info@mur-tec.com](mailto:info@mur-tec.com)

**CALGARY #403-923-3313**

**SARNIA**

**REGINA #306-537-2286**

**VANCOUVER**

**EDMONTON #780-951-4935**